

CLAMPBRO®

STRONG-ARM



QUICK LIFT HYDRAULIC JACK

MODEL NO: CTJ4000G

PART NO: 7623206

OPERATION & MAINTENANCE INSTRUCTIONS



ORIGINAL INSTRUCTIONS

GC0419 - ISS 1

INTRODUCTION

Thank you for purchasing this CLARKE Garage Jack.

Before attempting to use this product, please read this manual thoroughly and follow the instructions carefully. In doing so you will ensure the safety of yourself and that of others around you, and you can look forward to your purchase giving you long and satisfactory service.

SPECIFICATIONS

Length (not including handle):	720 mm
Width:	374 mm
Min height of saddle from floor:	105 mm
Max height of saddle from floor:	520 mm
Weight:	45.5 kg
Number of full strokes to maximum height:	6.5 strokes (63mm per stroke)
Oil Capacity:	250 ml
Rated Load:	4000 kg

GUARANTEE

This product is guaranteed against faulty manufacture for a period of 12 months from the date of purchase. Please keep your receipt which will be required as proof of purchase.

This guarantee is invalid if the product is found to have been abused or tampered with in any way, or not used for the purpose for which it was intended.

Faulty goods should be returned to their place of purchase, no product can be returned to us without prior permission.

This guarantee does not effect your statutory rights.

SAFETY PRECAUTIONS



WARNING: THE OPERATOR MUST FOLLOW ALL INSTRUCTIONS WITHIN THIS INSTRUCTION BOOKLET.

1. This jack is for lifting only. Do not move a load using the jack as a dolly.
2. Do not use to lift people.
3. Always inspect the jack before use. Make sure that all parts are in good condition and operating smoothly, and that no cracks or distortion is apparent. If in doubt do not use. Have the damaged parts replaced or consult your Clarke dealer.
- 4. Make sure that the jack is on a firm level base, and there is no possibility of it slipping when under load.**
5. Make sure the load is taken by the full saddle and that the point of lift on the load, is strong enough to support the load adequately.
- 6. Do not work under the raised vehicle until it is supported by suitable means e.g. axle stands, NEVER rely on the jack to support the vehicle by itself.**
7. Never push a load off the jack.
8. Ensure that all personnel are well clear of a load being raised or lowered.
9. Do not try to lift more than the rated load for the jack.
10. Do not use the jack if an oil leak is apparent. Consult your Clarke dealer.
11. Consult the vehicle handbook to determine the correct lifting points.
12. Always watch the jack and the load during operation.
13. Check the condition of the labels regularly and replace as required.
14. The jack must be maintained and repaired by suitably qualified persons.
15. Do not make any modifications to this jack or adjust any valves.

ENVIRONMENTAL PROTECTION

One of the most damaging sources of environmental pollution is oil products. Never throw away used hydraulic oil with domestic refuse or flush it down a sink or drain. Collect any hydraulic oil in a leak proof container and take it to your local waste disposal site.

If disposing of this product or any damaged components, do not dispose of with general waste. This product contains valuable raw materials and should be taken to your local civic amenity site for recycling of metal products.

OPERATION



WARNING: NEVER WORK ON THE VEHICLE WHEN SUPPORTED ONLY BY A JACK. THIS IS HIGHLY DANGEROUS. THE VEHICLE MUST BE SUPPORTED ON AXLE STANDS OR SUITABLE SUPPORTS BENEATH THE CORRECT JACKING/ SUPPORT POINTS.

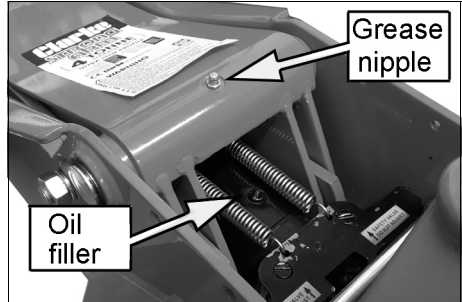
1. Ensure the vehicle to be raised is stable and on firm level ground with the wheels chocked.
 - The jack may move slightly during operation. It is important therefore, that the floor is clean and completely free from debris.
2. Position the jack so that the saddle is directly beneath the lifting point under the vehicle.
 - Consult the vehicle handbook to determine the lifting points.
3. Use the operating handle to close the release valve by turning it fully clockwise.
4. Pump the operating lever to raise the saddle to the jacking point.
5. Check that there are no obstructions to prevent a clean lift and make sure all personnel are well clear before raising the vehicle.
6. Pump the handle to raise the vehicle to the required level.
 - If, at any time, the jack feels spongy, follow the bleeding procedure under Maintenance.
7. Position suitable, good quality axle stands directly beneath the supporting points on the vehicle. Place the operating lever over the release valve and very gently twist the operating lever anti-clockwise to lower the load onto the stands.
8. Check constantly, preferably with an assistant, that the vehicle is resting correctly on the axle stands and that the stands are stable before the weight is taken.
 - Ensure the axle stands are centred under the support point and fully stable before full weight is taken.
9. To stop it lowering at any point, turn the operating valve clockwise again. Always avoid a rapid descent by turning slowly.

NOTE: Ensure this is carried out under complete control. DO NOT allow the load to drop suddenly as this could damage internal parts.
10. Completely remove the jack from the vehicle.

MAINTENANCE

CHECKING/MAINTAINING THE OIL LEVEL

1. Inspect the hydraulic parts of the jack for signs of oil leaks. If the oil needs topping up proceed as follows.
2. Ensure the jack is fully lowered by turning the control valve fully anti-clockwise.
3. Remove the cover plate and the oil filler plug.
 - The oil should be almost level with the bottom of the filler hole.
 - Oil can be topped up using Clarke Hydraulic Oil (Part number 3050830 -1 litre).
4. Bleed any air from the system as described below and replace the filler plug and cover plate.
5. Dispose of old/spilled oil appropriately and wipe up any spillage. Never throw away used hydraulic oil with domestic refuse or flush it down a sink or drain. Collect any hydraulic oil in a leak proof container and take it to your local waste disposal site.
6. If movement of the main arm becomes sluggish a couple of shots of grease to the grease nipple will be beneficial.



BLEEDING AIR FROM THE HYDRAULIC RAM

1. Use the operating lever to turn the release valve anti-clockwise, relieving pressure inside the jack.
2. Pump the operating lever several times to purge air from the hydraulic ram.
3. Turn the release valve clockwise and test the jack. If efficiency is still low, check the oil level as described above.
4. Wipe up any oil spillage and dispose of old/spilled oil appropriately.

STORAGE

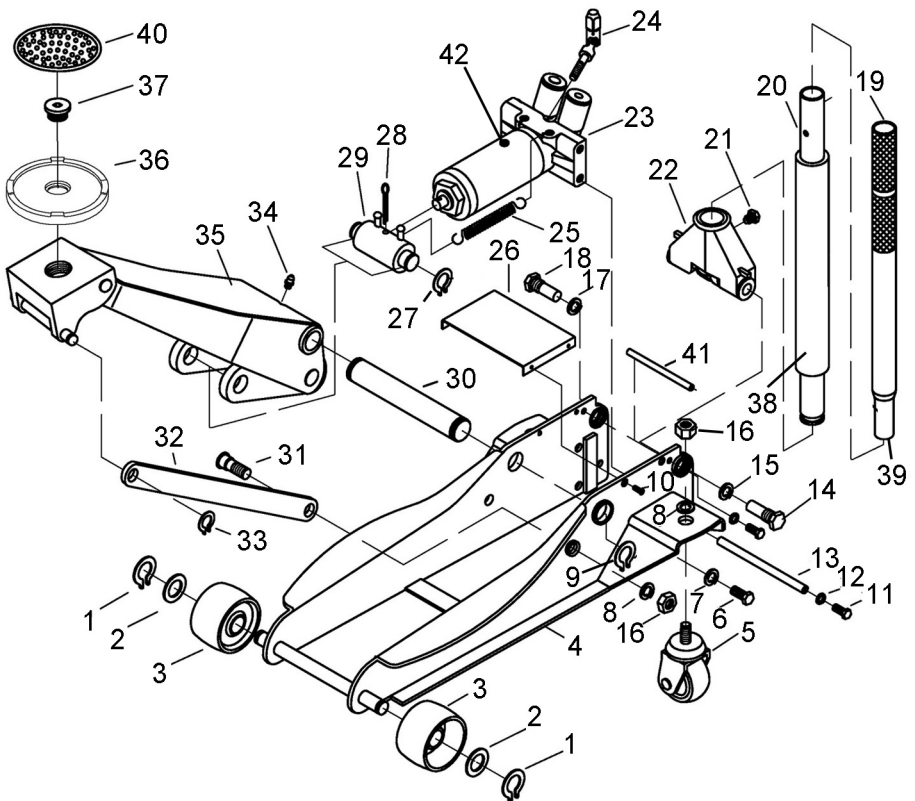
1. Store in a dry place with the ram fully retracted, where it cannot be damaged by moisture. If stored for long periods, clean any grime from the piston area before use.

TROUBLESHOOTING

PROBLEM	CAUSE	SOLUTION
Jack will not lift the rated load	Low oil level	Check for leakage and top up if required.
	Release valve not closed	Turn release knob fully clockwise
	Air in the hydraulic ram	Bleed air as on page 6.
Jack lowers when under load	Release valve not fully closed	Turn the release knob fully clockwise
	Air in the hydraulic ram	Bleed air as on page 6.
Pump feels spongy	Low oil level	Check for leakage and top up if required.
	Air in the system	Bleed air as on page 6.
Handle raises or flies back under load	Air in the hydraulic ram	Bleed air as on page 6.
Jack will not lift full height	Low oil level	Check for leakage and top up if required.
	Air in the hydraulic ram	Bleed air as on page 6.
Jack will not lower completely	Return spring may be faulty.	Return to your Clarke dealer for repair

If any of these remedies fail to restore your jack, consult your Clarke dealer.

COMPONENT PARTS - GENERAL ASSEMBLY



COMPONENT PARTS - GENERAL ASSEMBLY

	Description
1	Circlip 20mm
2	Front Wheel Washer
3	Front Wheel
4	Chassis
5	Rear Caster
6	Screw M12 x 22
7	Washer M12
8	Washer M16
9	Circlip 30mm
10	Screw M5 x 12
11	Screw M8 x 20
12	Washer 8mm
13	Tie Rod
14	Handle Yoke Bolt (RH thread)
15	Washer 18
16	Nut M16
17	Washer 18
18	Actuating Yoke Bolt (LH thread)
19	Handle Upper half
20	Handle Lower Half
21	Handle Set Screw

	Description
22	Handle Yoke
23	Hydraulic Pump
24	U-joint
25	Return Spring
26	Cover Plate
27	Circlip 25mm
28	Pin 4 x 55
29	Hydraulic Pump Linkage
30	Lift Arm Shaft
31	Pivot Rod Bolt
32	Pivot Rod
33	Circlip 15mm
34	Grease Nipple
35	Lifting Arm
36	Saddle
37	Saddle Screw
38	Handle Sleeve
39	Handle Lock Clip
40	Rubber Saddle Pad
41	Handle Yoke Stop Rod
42	Filler plug

DECLARATION OF CONFORMITY



Clarke[®]
INTERNATIONAL

Hemnall Street, Epping, Essex CM16 4LG

DECLARATION OF CONFORMITY

This is an important document and should be retained.

We hereby declare that this product(s) complies with the following directive(s):

2006/42/EC Machinery Directive.

The following standards have been applied to the product(s):

EN 1494:2000+A1:2008.

The technical documentation required to demonstrate that the product(s) meet(s) the requirement(s) of the aforementioned directive(s) has been compiled and is available for inspection by the relevant enforcement authorities.

The CE mark was first applied in: 2019

Product Description:	4 Tonne Garage Jack
Model number(s):	CTJ4000G
Serial / batch Number:	N/A
Date of Issue:	15/03/2019

Signed:

J.A. Clarke
Director

OTHER PRODUCTS IN THE CLARKE RANGE

3 TONNE AXLE STANDS



- Supplied in pairs
- Fitted with ratchet action for quick adjustment

Part No. 7600065

AWD1 AUTOMOTIVE WHEEL DOLLY



- Four swivel castors for easy movement in confined spaces
- Non marking white nylon castors
- Fits most vehicles
- Sold as a pair

Part No. 7630205

CIR18LICCORDLESS IMPACT WRENCH



- 18V 2ah Li-ion batteries
- ½" square drive
- LED worklights, quick charger
- 3 x forward/3 reverse speeds

Part No. 4500616

CMC40 CAR CREEPER



- Powder coated finish
- Vinyl covered back/headrest
- Six swivel castors
- Twin storage trays

Part No. 7630189

A SELECTION FROM THE VAST RANGE OF

Clarke®

QUALITY PRODUCTS

AIR COMPRESSORS

From DIY to industrial, Plus air tools, spray guns and accessories.

GENERATORS

Prime duty or emergency standby for business, home and leisure.

POWER WASHERS

Hot and cold, electric and engine driven - we have what you need

WELDERS

Mig, Arc, Tig and Spot. From DIY to auto/industrial.

METALWORKING

Drills, grinders and saws for DIY and professional use.

WOODWORKING

Saws, sanders, lathes, mortisers and dust extraction.

HYDRAULICS

Cranes, body repair kits, transmission jacks for all types of workshop use.

WATER PUMPS

Submersible, electric and engine driven for DIY, agriculture and industry.

POWERTOOLS

Angle grinders, cordless drill sets, saws and sanders.

STARTERS/CHARGERS

All sizes for car and commercial use.



PARTS & SERVICE: 0208 988 7400

E-mail: Parts@clarkeinternational.com or Service@clarkeinternational.com

SALES: UK 01992 565333 or Export 00 44 (0)1992 565335

Clarke® INTERNATIONAL Hemnall Street, Epping, Essex CM16 4LG
www.clarkeinternational.com